



MAHASARAKHAM UNIVERSITY STUDENT GUIDE



Published by the
Office of International Relations
Maharakham University

www.ITSGU.BC.TI

MAHASARAKHAM UNIVERSITY

STUDENT GUIDE



Published by the Office of International Relations
Mahasarakham University

Acknowledgements

All content creative commons copyright.

Our sincere thanks go to John Shields for much of the leg work, research, design and text contained within this student guide.

Editor: Micael Talbot

INDEX

Click on the link to go to the page

Introduction	Hospitals
Welcome from the President	Emergency Ambulance
Welcome from Head of International Relations	Dentists
Climate	Post Offices
Getting to Mahasarakham	Pharmacies
MSU in a Nutshell	Where to eat and drink
Getting around Mahasarakham	Performance spaces
Getting into and around town	Gymnasium, sport & recreation
International Relations Office	MSU Book Center
Accommodation	College of Politics and Government
Campus Services	Humanities & Social Sciences Building
Using the Academic Resource Center	The Little Market
MSU ID Cards	MSU Plaza
Banking and ATMs	MSU Museum and Zoo
ATMs at Big C	Self Help Information
ATMs Downtown	Withdrawing money from overseas
Campus Map	Off Campus Shopping
Key to Campus Map	Getting Things Done
Public phones	Getting a mobile phone
Computer Center	Emergency Information
Health Clinic	Public Holidays in Thailand

INTRODUCTION

This guidebook has been produced by the Maharakham University International Relations Office to assist international students and staff as they settle into the university. We trust your time with us will be both enjoyable and fruitful. Should you have questions that are not answered by the guidebook, please feel free to contact us.

The International Relations Office is located on the third floor of the President's Building (see the campus map in the middle pages of the guidebook).



Enter to the right side of the building as you approach from the large flagpole.

Mailing address:

International Relations Office
3rd floor, President's Building
Maharakham University

Khamriang Subdistrict

Kantarawichai District Maharakham

Thailand

Telephone +66 4375 432140

Email 1: iroffice@msu.ac.th

Email 2 : msuthailand@gmail.com

44150

MAHARAKHAM UNIVERSITY SESSIONS

FIRST: 1st week of June – 2nd week of October

SECOND: 1st week of November – 1st week of March

WELCOME FROM THE PRESIDENT OF MAHASARAKHAM UNIVERSITY

ASSISTANT PROFESSOR DR. SUPACHAI SAMAPPITO



If you are reading this guidebook I can assume you are new to Mahasarakham University. Therefore it gives me great pleasure to welcome you as a student or staff member to our campus.

Mahasarakham University is one of the fastest growing Universities in Thailand. Our new campus is less than ten years old therefore the many new buildings being erected will contain the most modern facilities available, a must have in the modern world. We are currently investigating, developing and instigating innovative policies towards the internationalisation of our University of which I invite you to become an integral part.

[Back to Index](#)

Mahasarakham itself can be considered the very centre of the north-east of Thailand, both physically and academically. Therefore our student base draws from a very large geographical area. We now intend to broaden this area internationally. Our nineteen faculties and eleven research institutes are already establishing an international presence on the world academic stage and are continually working towards providing international programs at all academic levels.

In a global world with educational mobility becoming more and more available it is of great importance we identify and encourage academic excellence deriving from Mahasarakham University for the benefit of not only Thailand but also to contribute to world-wide epistemology. Also of great importance is our linking the world of academia to be inclusive and beneficial to community and business, both locally and globally.

From this page I would like once more to extend a warm welcome to you. There is a wonderful world of rich cultural tradition blended with the modernity of the twenty first century available to be explored both within and without the hallowed halls of Mahasarkham University. I hope your stay with us will produce mutual cultural and academic benefits which remain with us all far into the future.

**WELCOME FROM THE VICE-PRESIDENT FOR PLANNING
AND INTERNATIONAL RELATIONS – MAHASARAKHAM UNIVERSITY
ASSOCIATE PROFESSOR DR. NATHANON TRACHOO**

On behalf of the staff of the Maharakham University International Relations staff I extend a warm welcome to you.



MSU President Dr. Supachai Samappito has charged myself and my staff with the task of assisting in the internationalisation process of Maharakham University.

The functions of the International Relations Office are many and varied. In relation to you, the reader and user of this guidebook, I hope this is the beginning of a close and valuable friendship. It is our mission to ensure your stay with us is made as comfortable and smooth in its organisation as possible. Therefore I invite you to feel free to avail

yourself of the many and varied services we have on offer within the International Relations Office.

Our friendly and highly trained staff are available to help with any concerns you may have ranging from formal requirements such as international student/job applications and enrolments, visa and travel applications through to accommodation as well as any small personal problems which may arise.

Our staff speak Thai, English, Chinese, Vietnamese, Cambodian , Myanmar.

This guide book is intended to help you as an international student, academic or even visitor to Maharakham University. I hope you find it helpful and please remember you are always welcome to pay us a visit at our office on the right hand side of the third floor of the President's Building.

CLIMATE

The climate in Mahasarakham is generally warm to hot. There are three seasons each year. The rainy season starts about June and lasts until October. That doesn't mean that it rains nonstop. However, one should always expect the possibility of rain—often quite heavy—during that time. Following the rainy season, from November to January, is the cool season when temperatures may occasionally drop to about 15° Celsius. The days are usually pleasantly sunny. The hot season runs from February to May and temperatures soar, often reaching the high 30s.

GETTING TO MAHASARAKHAM



Mahasarakham Province is roughly in the center of the Northeast or Isan Region of Thailand. Mahasarakham city is the capital of the province. It is about 470 kilometers from Bangkok.

There are a number of ways to reach Mahasarakham from Bangkok. Thai Airways have three flights a day between Bangkok and Khon Kaen which is 75 kilometers from Mahasarakham. From Khon Kaen airport travelers take a tuk tuk to the bus station where they can catch a bus to Mahasarakham. Alternatively a car and driver may be hired at the airport. Day visitors should arrange for their driver to wait for the return journey as it will be more difficult to hire a car and driver in Mahasarakham.

Several bus companies run comfortable air-conditioned buses between Bangkok's north-eastern bus terminal at Mo Chit and Mahasarakham. The trip takes about seven hours. Refreshments are served on board and the bus stops for a meal at an appropriate time. To return to Bangkok a bus can be boarded at the Mahasarakham bus station or from the Rungprasert bus terminal behind Serm Thai in Pangmuangbanchaa Road.

For travelers who like the idea of an overnight train trip, a train with sleeper carriages runs from Bangkok to Khon Kaen. Once again a tuk tuk is needed to get to the bus station where a bus will bring you the rest of the way to Mahasarakham.

MSU IN A NUTSHELL

MSU Motto : *'Public devotion is a virtue of the learned.'*

History

On March 27, 1968 Mahasarakham College of Education was established.

We became a regional campus of Srinakharinwirot University in 1974.

We became Mahasarakham University on December 9, 1994 as Thailand's twenty-second government University by the graciousness of His Majesty King Bhumibol Adulyadej.

The new campus at Khamriang was established in 1998.

Our Vision

Mahasarakham University is a community-based institution of knowledge and wisdom, academically serving the community with varieties of educational systems and proper technologies, in addition to taking a leading role in research and integration of local wisdom for international recognition.

Mission Statement

Producing graduates of high capability and decency with the aim of improving the quality of human resources to fulfill the needs of the nation;

Developing diverse educational systems and academic services of high quality;

Seeking and accumulating knowledge through integration of local and universal wisdom;

Promoting and developing research activities for academic excellence and the community's sustainable strength.

Mahasarakham University has

Over 37,000 students

Two campuses

Seventeen faculties

Eleven research centres

Fifteen academic centres in north-eastern Thailand provinces

A radio and television station

A hospital and pharmacies

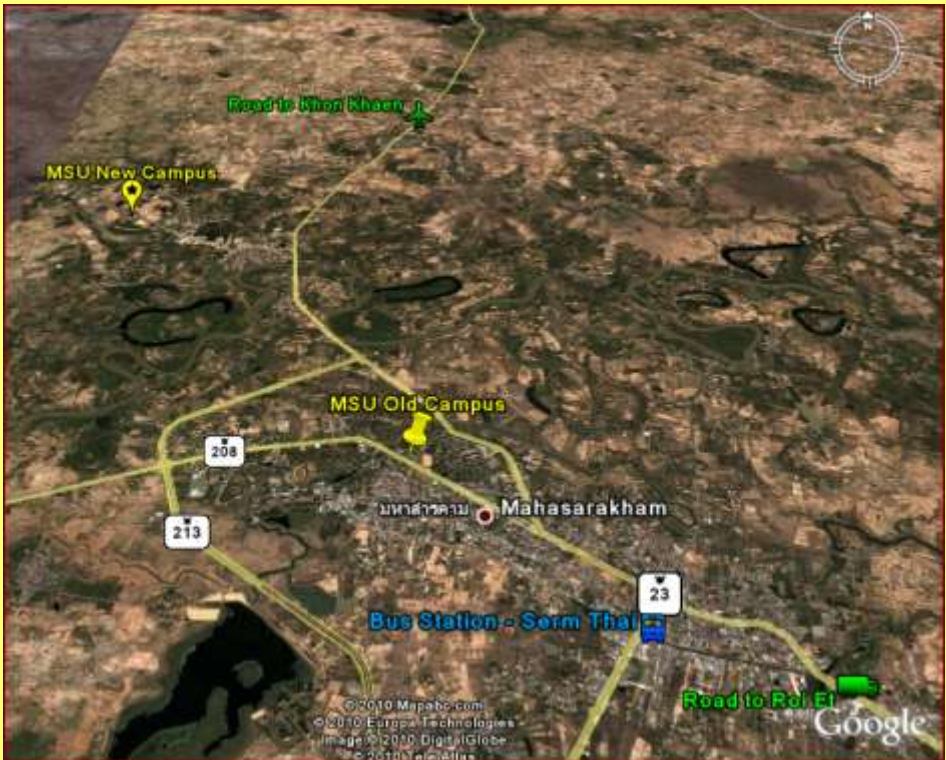
A zoo

An historical village

Museums

GETTING AROUND MAHASARAKHAM

MSU has two campuses. The original campus is commonly known as the 'old' campus or 'mor gao'. It is close to the central area of Mahasarakham city and houses the following faculties and facilities: Faculty of Education, Faculty of Technology (soon to move to Khamriang campus), Faculty of Medicine, Faculty of Tourism and Hotel Management, Faculty of Environment and Resource Studies, Faculty of Veterinary Medicine and Animal Science and the Satit Demonstration Primary (Elementary) School.



Map by Google Earth

Khamriang Campus is approximately nine kilometers from the center of Mahasarakham. It is the main administrative center of the university and is the home of most faculties as can be seen in our campus map (centre pages).



ROI-ET RATANAKIT LIMITED PARTNERSHIP



WE SELL COMPUTER HARDWARE,
SOFTWARE AND IT ACCESSORIES. WE
ALSO OFFER COMPUTER AND IT ACCESSORIES REPAIR SERVICE.
PLEASE BE CONFIDENCE OUR SERVICE



216-218, THAWAPHIBAN ROAD, NAI MUANG SUB-DISTRICT,
MUANG DISTRICT, ROI-ET PROVINCE, 45000
TEL: 043-511614, 526733
FAX: 043-511725

GETTING INTO AND AROUND TOWN

If you're on Khamriang Campus and you need to go downtown or to the old campus, the easiest way is to catch a minibus (sorngtheau). These leave regularly, seven days a week between 6.00 am and 8.30 pm, from near the bridge that crosses the canal from the canteen(19). They travel on the ringroad and turn left into Taakonyaang-Khamriang Road. The downtown terminus is the bus station. You can get on or off anywhere in between. Flag them down by extending your hand at waist level and moving it up and down. Cost is 8 baht no matter how far you go.



Dark or light blue sorngtheaus go to the bus station. Yellow sorngtheaus go to the old campus. Some sorngtheaus may go elsewhere.

To make sure you catch the right one ask, 'Bai bor kor sor mai?' (Do you go to the downtown bus station?); 'Bai Mor Mai mai?' (Do you go to the Khamriang campus?) or 'Bai Mor Gao mai?' (Do you go to the old campus?)

This is a destination sign on a sorngtheau heading to the downtown bus station (bor kor sor).



This is a destination sign in the window of a sorngtheau. It states that the sorngtheau is going to Mor Gao, ie the old campus.

INTERNATIONAL RELATIONS OFFICE

The IRO is located on the third floor of the President's Building (36). Enter to the right side from the main road. Please note in Thailand the ground level floor is designated as the first floor.

Office hours are 8.30 am to 4.30 pm Monday to Friday.

Contact us via e-mail irooffice@msu.ac.th or msuthailand@gmail.com

Contact us via telephone 04375-4241

The IRO staff will do their best to assist International staff and students. You are welcome to visit us at any time with enquiries or any problems you may encounter.

We have computer terminals available for the use of international staff and students.

The IRO will help you prepare documents to assist with obtaining, extending and renewing visas and work permits. There may be costs involved such as fees imposed by government offices which the student or staff member is required to pay.

Visas are normally renewed in Khon Khaen. Staff at the Visa office speak Thai only so get an IRO staff members mobile number in case you encounter problems.

You can hire an MSU van and driver to take you to the visa office but seven days notice must be given.

The IRO also assists Thai students and staff travelling overseas on behalf of MSU with documents necessary to obtain visas.

Important : Students and staff requiring Visa services should allow at least two weeks for preparation of documents before renewal deadlines.

ACCOMMODATION

There is a large amount of accommodation available and more is being built continuously to cater for the increasing number of students.

Most accommodation is in the form of apartments. These are single rooms in apartment blocks. Prices vary but the average price varies from 3000 to 5500 baht for one month. Electricity and water is normally not included and estimated at 1000 – 1500 per month depending on how much you use the air conditioning. It is recommended you take an air conditioned apartment. A small bond is normally required.

Apartment rooms vary in size but are quite comfortable for one person as they are designed for shared occupancy.

The rooms are normally furnished to accommodate two students and contain two

single beds, desks and wardrobes. They normally also have their own bathroom (shower / toilet) and a small balcony. It is not advisable to cook in the apartment and there is really no need as food stalls are available everywhere. If you need a fridge you should be able to rent one for about 300 baht per month.

There is on campus accommodation at both the new and old campuses. On the new campus there are Ajarn's (teacher's) apartments as well as student accommodation. You can find apartments available either on the old or new campuses or off campus with many locations available all of the way between downtown and the new campus.

Availability of accommodation fluctuates with session times.

The International Relations staff will help you with your accommodation needs.

CAMPUS SERVICES

USING THE ACADEMIC RESOURCE CENTRE



The MSU library or Academic Resource Centre (AREC) is located conveniently in the center of the Khamriang Campus (26). It is open from Monday to Saturday 8.00 am to 8.00 pm and Sunday 8.00 am to 6.00 pm. It is closed on public holidays.

Resources in the library may be borrowed by students and staff who have appropriate MSU ID. When borrowing, the ID card is either shown to library staff or used to access the library automation system. Staff will be happy to demonstrate.

Teaching staff may borrow up to 20 items at a time. Items must be returned before the end of the semester excluding fiction which may be borrowed for a maximum of seven days. Non-teaching staff may borrow up to 10 items at a time for a maximum of seven days. Graduate students may borrow up to 15 items for a maximum of seven days. Undergraduate students may borrow up to 10 items for a maximum of seven days. There are fines for late returns.

The following resources are available for use within the library only: reference

materials, journals, newspapers, electronic media and resources held in the Sirindhorn Isan Information Center.

Should resources not be returned to the AREC, or returned damaged, students will be prevented from reenrolling at the university and will not receive a certificate or diploma until the resources are returned or paid for and outstanding fines paid. In the case of staff, the university is authorized to deduct the replacement cost of unreturned resources from the staff member's salary.

Copying or scanning of resources is available at reasonable cost.

Visitors must be dressed neatly and modestly. Smoking, eating and drinking are not allowed in the AREC. Noise that interferes with the concentration of others is not permitted. There is also a branch of the AREC in the College of Politics and Governance. It stocks mainly resources related to politics and law. These may be accessed by all staff and students. There is another branch on the old campus which stocks resources relating to subjects taught by faculties based on that campus.

To contact branches of the AREC: Khamriang campus phone 043 754 333-40; internal extensions 2405, 2491; phone/fax 043 754 358; internal extension 2491; Old campus phone 043 711 162, internal extension 6072. Thai website: <http://www.library.msu.ac.th>, English website: http://lib3.msu.ac.th/screens/mainmenu_e.html

MSU ID CARDS

You will need an MSU ID card. This card is also used for wireless internet access and when borrowing books from the library.

Students ID Card

Students may open a bank account with TMB Bank which is linked to your student ID card. Your ATM card shows your photograph and doubles as a student ID card which is needed to access the library, wireless internet and other services. The IRO will assist international students to obtain one.

Students must pay a fee for services provided by the university. Payment of the fee is linked to the barcode on the card. Non-payment of the fee means students will not be able to access the library or other services.

Staff ID Card

To avoid language problems we recommend that international staff obtain their ID card through the IRO. The ID card is issued to staff by the Personnel Office. Please bring a copy of your contract, a copy of your passport and two recent passport-style photos. The card will need to be renewed each year when your contract is renewed.

BANKING AND ATMs



Two banks have small branches, along with ATMs, on Khamriang campus. TMB is in MSU Plaza (18); Bangkok Bank in the Faculty of Informatics (27).

Additional ATMs may be found on campus at
 President's Building (36): TMB, Krung Thai
 Biological Sciences Building (6): TMB
 Canteen (19): SCB, Krung Thai
 Faculty of Informatics (27): Kasikorn
 Faculty of Accountancy & Management (22) TMB

ATMs AT Big C

Krung Thai, Siam Commercial (SCB) and Bangkok Bank each have branches at Big C. They each also have ATMs on the outside area of the center that are accessible after hours.

ATMs DOWNTOWN

There are a total of seven ATMs in the side street outside Serm Thai: Krung Thai, Bangkok Bank, TMB, Kasikorn, Government Savings Bank, SCB and Siam City Bank.

There is also a Bangkok Bank Branch close by in the same street. (Bangkok Bank is agent for Western Union.)



Digital Studio
Color Lab

We serve you photofinishing services,
using modern equipment
and instant photo.

190, nears Somthawin Canal,
Talad sub-district, Muang district,
Maha Sarakham province, 44000
Tel:043-723058 Fax: 043-711025

The advertisement features a collage of images. At the top left, a person is shown from the side, holding a camera to their eye. To the right, a banner for 'Digital Studio Color Lab' is displayed, with the Thai text 'สี 7 สีมาเอเซีย' and 'สี 7 สีมาเอเซีย' visible. Below the banner, a central text box contains the service description. Surrounding this text are several photo samples: a group of two women, a man sitting at a desk, a close-up of a woman's face, a woman in a graduation gown, a group of people in graduation gowns, and a woman in a graduation gown. The background is decorated with yellow and black circular patterns and a stylized white graphic of a flower or leaf.



MAP

KEY TO MAP

1. Staff apartments, commonly known as Ajarn’s Condos
2. The research complex
3. Faculty of Technology
4. Faculty of Engineering
5. Silk Innovation Center
6. Biological Sciences Building
7. Faculty of Science
8. Faculty of Informatics (new)
9. Student dormitories
10. Basketball courts
11. Swimming pool
12. Takraw courts
13. Badminton courts
14. Tennis courts
15. Football (soccer) field
16. Gymnasium
17. Primary Care Center – Health Clinic
18. MSU Plaza
19. Canteen
20. Student Affairs Building - Post Office.
21. Amphitheater
22. Faculty of Accountancy & Management
23. College of Music
24. Faculty of Fine and Applied Arts
25. Faculty of Architecture, Urban Design and Creative Arts
26. Academic Resource Center and Library
27. Faculty of Informatics (old)
28. Faculty of Nursing
29. Faculty of Humanities and Social Sciences (old)
30. Faculty of Humanities and Social Sciences (new)
31. College of Politics and Governance
32. Building C -Under construction
33. Faculty of Pharmacy
34. Faculty of Public Health
35. Satit High School
36. President’s Building
37. MSU Museum
38. Mini zoo
39. Police station

PUBLIC PHONES

Level 1 courtyard of the President’s Building (36)

Office of Student Affairs/Canteen Building (map building 14)

Outside the canteen (map building 12)

There are several on the TMB corner of MSU Plaza

COMPUTER CENTER

The MSU Computer Center is in the Faculty of Informatics/Computer Center Building (27). It is open from 8 am to 8 pm Mon to Fri and 8 am to 6 pm Sat and Sun. Access is available to both students and staff by showing the appropriate ID. A single computer can be accessed for internet use or staff may book a computer lab for class use.

To access the internet from any computer that uses the MSU server will soon require login. By registering for this access, students and staff are eligible to obtain legal copies of Microsoft Windows XP/Vista, Microsoft Office and Kapersky Anti-virus for free. This software is available for download or on CD. POP3 email access can be made available by request.

HEALTH CLINIC



The Faculty of Medicine runs two clinics staffed by teaching doctors. Khamriang Clinic is on the ring road, between the gymnasium and MSU Plaza (17). Opening hours 8.30 am—6.30 pm, Monday to Friday. A dentist is in attendance on Tuesdays, 9.00 am—3.00 pm.

Another clinic is in the Faculty of Medicine, Old Campus, open 8.30 am—7.30 pm, Monday to Friday and 8.00 am—12.00 pm, Saturday. An eye doctor and children’s doctor are in attendance Monday and Tuesday, 8.00 am—12.00 pm.

EVE & BOY

This is a place where you can choose different and famous brands of cosmetic, perfumes and beauty products from many countries



673, Worabot road, Talad sub-district

Muang district, Maha Sarakham province, 44000

Tel: 043-740374 Fax: 043-741044 043-79113

HOSPITALS

If you need emergency, not so urgent medical attention or medication unavailable from a pharmacy you can present yourself to Mahasarakham hospital casualty department.

You will find the nurses and staff very helpful. All Thai doctors speak English. There is normally no charge to see the doctor for treatment but you will have to pay for any medications.

Mahasarakham Public Hospital is located in the centre of town in Phadung Withi Road (near cnr Rimklongsomthawin Rd) phone 043 740 993

The following private hospitals in Khon Kaen will send an ambulance if required.

Khon Kaen Ram, phone 043 333 800

Srinagarind Hospital (Khon Kaen Uni), phone 043 236 808, 043 244 700

EMERGENCY AMBULANCE

MSU has an emergency ambulance which can be contacted on 08 1965 6924.

DENTISTS

A dentist is in attendance at the Primary Care Center (17), Khamriang Campus on Tuesdays, 9.00 am—3.00 pm.

There is also a dental clinic at the Public Hospital (see below) open in the evenings.

Dentists may also be found in Taakonyaang and in Mahasarakham. If the clinics mentioned above do not suit your needs, talk to a local resident who may be able to recommend one. For specialist dental treatment, it may be necessary to go to Khon Kaen.

POST OFFICES

There is a small post office in the Office of Student Affairs/Canteen Building (20), open 9 am—2 pm, 3 pm—6 pm, Monday to Saturday.

There is also a post office in Taakonyaang, in front of the Privilege Guesthouse.

There is a post office near the old campus on Nakhom Sawan Road.

The main Mahasarakham post office is in Nakhom Sawan Road, near the central market at the clock roundabout.

PHARMACIES

For pharmaceutical advice visit one of the three pharmacies operated by the Faculty of Pharmacy.



There's a branch on campus in MSU Plaza (18) which is open 8.00 am—10.00 pm, Monday to Friday and 10 am—10 pm, Saturday and Sunday. During summer months it closes at 8.00 pm.

The pharmacy in Taakonyaang is not far from campus, on the left-hand side heading towards town on Khamriang-Taakonyaang Road, about 100 meters past the first Seven-eleven. It is open 9.00 am—10.00 pm, Monday to Friday and 10 am—10 pm Saturday and Sunday.

The downtown pharmacy is in Pangmuangbanchaa Road. If you stand at the canal looking at the front of Serm Thai, this road runs alongside Serm Thai on the right. The pharmacy is opposite the market a few blocks down. It is open 8.30 am—9.00 pm, Monday to Friday and 10.00 am—9.00 pm, Saturday and Sunday. On Thursdays it is open 7.30 am—9.00 pm for refilling diabetes/hypertension prescriptions and for providing pharmaceutical care service.

WHERE TO EAT AND DRINK

The canteen (19) is air-conditioned. Opening hours 7 am to 4 pm, seven days a week. May be closed during holidays.

Office of Student Affairs/Canteen Building (20) up to 12 food stalls.

College of Politics and Governance (31) seven food outlets and coffee shop

MSU Plaza (18) 2nd floor



Ruenrom รื่นรมย์ (in English means happy or pleasant) coffee shop serves a variety of drinks in a pleasant outdoor environment among trees, just outside MSU Plaza(18).

There are also many eating places on the roads leading into and out of the campus. A guide to over 200 of these was created by MSU tourism students in English: <http://www.bloggang.com/mainblog.php?id=musicmovies>

If you would like to venture off campus, there is a website that reviews restaurants in the Khamriang Taakonyaang areas:

<http://www.bloggang.com/mainblog.php?id=musicmovies>

PERFORMANCE SPACES

The amphitheater (21) is often used for evening cultural performances but not usually in the rainy season.

GYMNASIUM, SPORT & RECREATION

Facilities are available for swimming (11), basketball (10), takraw (12), badminton (13), tennis (14) and football (15).


OTHER ON CAMPUS SERVICES

Beauty salons, hairdressers, Buddhist shrine, Muslim prayer room, Christian churches, photocopy services, laundries and mini-marts.

THANINTE

Color Lab

We serve you photofinishing services, using modern equipment and instant photo.



Canon FUJIFILM

Address: 1170/1-2, Worabot road, Maha Sarakham province
Tel: 043-723717, 043-721260

Klunghana Witthaya

โรงเรียนพัฒนศึกษานานาชาติ



We create and design graphic printing media and book format

232/199 Moo 6, Soi Srijan 39, Naimuang sub-district, Muang district, Khon Kean province 40000
Tel: 081 - 7174207, 043-3285891

Mobile Steak Restaurant



Be delicious with the best steak at Mobile Steak Restaurant

250/25 Sravathikham road, Taled sub-district, Muang district, Maha Sarakham province, 44000
Tel: 085-0093625, 099-4196641

GG Design



We create and design art work of printing media, vinyl inkjet outdoor and advertisement with reasonable price

24/6, Thekronyong sub-district, Khontharavichai district, Maha Sarakham province, 44100
Tel: 081-3749129

MSU BOOK CENTER

On level 2 of the Faculty of Informatics (27) you will find the main MSU Book Center. This shop has a good range of text and other books mostly in Thai language. They also have talking dictionaries which are a pocket solution to translation from and to many languages. MSU Book Center's office is also in this building.

A general store, run by MSU Book Center, stocks uniforms, stationery, gifts, personal items, packaged food and drinks.

COLLEGE OF POLITICS AND GOVERNMENT

The College of Politics and Government (31) contains a small MSU Book Center, mostly Thai books but does have a small range in English. Also stocks stationery, some CDs, snack foods, drinks and some gift lines.

Also a coffee shop, optometrist, photocopy center and a branch of the library stocking books mostly related to law, politics and governance—available for borrowing by all staff and students.

HUMANITIES & SOCIAL SCIENCES BUILDING

The Humanities & Social Sciences Building (29) has a minimart that stocks stationery, gifts, personal items, packaged food and drinks.

THE LITTLE MARKET

The little market (Dtalaat Noi) is set up each evening near the student dormitories (9). Generally, it starts from around 5 pm and finishes at about 10 pm. This may vary depending on how busy it is. The size of the market varies from night to night as some vendors attend other markets on some nights. Food can be obtained for your dinner; either eat at the market or take it home. On busy nights clothing, household items and many other goods may be found. The market is usually at its biggest, most interesting and most crowded on Tuesday and Wednesday nights.



There are many other markets close to but outside the campus. It is best to ask students about these as they vary in locations and operating times.

MSU PLAZA



MSU Plaza(18) has a small number of stores selling various items. This includes a pharmacy, a well-stocked convenience store, stationery shop and more. There is a canteen on the second floor. Stores may set their own hours but generally, the plaza is open from 8 am to 8 pm Monday to Saturday and to 7 pm on Sunday.

MSU MUSEUM AND ZOO

A visit to MSU Museum (37) is an opportunity to learn about the traditional local Isan lifestyle and the history of MSU. The MSU museum comprises six buildings which are typical farm and village homes and outbuildings. As lifestyles change the museum will be a reminder of the way local people lived in the past.

One building in the museum has been devoted to a display showing the history of MSU. Interactive displays show the ways our university has changed over the years. Visitors engage with photographs and audio stories (in Thai) which include reminiscences from several generations of alumni. A conference room with seating for 45 is available within the museum.

The museum sits alongside a pond and among trees creating a delightful and peaceful atmosphere for relaxing while learning about local culture, the university and nature. It can be found on the left-hand side of the road when entering the university from Taakonyaang. The museum is open Monday to Friday 8.30 am to 4.30 pm. For enquiries, please phone 04 375 4380.

Complimenting the museum next door is a mini zoo (38) containing four species of deer, rabbits, guinea pigs, green peafowl, red jungle fowl and several species of parrot. The zoo was set up with assistance from Nakhon Ratchasima Zoo. It is a place where families can bring their children to enjoy the animals as living creatures and also to provide opportunities for farmers to investigate possibilities of farming different species.

Other individual faculties also have specialized museums.

Yor Phu Thai
Restaurant

Tasting delicious food and having a good time with beautiful scenery at Yor Phu Thai
Each meal 34.00

165 Ban Thakhonyang, Thakhonyang sub-district, Khamtharawichai district, Maha Sarakham province 44150
Tel: 043-749331
Mobile phone: 089-8428931

Index Concept Furniture Limited Partnership

The center of Index Concept furniture with different styles and high quality

421, Padungwithee road, Talad sub district, Muang district, Mahasarakham province, 44000
Tel: 043-722486
Fax: 043-740796

The Living Room Bar and Restaurant

170/5 Takasila Condominium, Muang district Maha Sarakham province, 44000
Tel: 043-742752

Apichat Publishing Limited Partnership

Creating all kinds of printing media: journal, brochure, poster etc...

Tel: 043-721403
Fax: 043-722397

SELF HELP INFORMATION

WITHDRAWING MONEY FROM YOUR OVERSEAS BANK ACCOUNT

If you have a bank account in your home country that is linked to Visa, Mastercard or similar, you can withdraw money or get a cash advance from most Thai ATMs. However, apart from a fee based on a percentage of the amount withdrawn, there will probably be a flat fee or fees. You need to check with your bank to see what the fees are. The point is that if you are charged a flat fee of say \$5 per withdrawal you will pay this every time. If you withdraw 30 baht, you will pay a \$5 fee. If you withdraw 20,000 baht you will pay a \$5 fee. Under these circumstances you are going to save more money by withdrawing more each time. If you don't want to carry large sums of money around, get a Thai bank account, deposit your withdrawn funds in it and then withdraw small amounts from your Thai account as you need them. You should not be charged to withdraw from your Thai account provided you withdraw from local ATMs of the same bank or over the counter from the branch. When withdrawing from your overseas account you will need to know the maximum that can be withdrawn at the ATM. There may be a limit put on your account by your home bank. There will also be a limit placed on the ATM by the Thai bank. Most Thai banks have a limit of 20,000 baht.

OFF-CAMPUS SHOPPING

Maha Sarakham offers residents and visitors a variety of shopping experiences. In the center of town, one block from the bus station, is Serm Thai Plaza, a small shopping mall where all kinds of merchandise are available. Shoppers will find various departments such as clothing, sports equipment, cosmetics, household utensils, electronic devices, books and magazines, music CD's and DVD's, groceries, as well as food and drinks. Alternately, relax by watching a movie (usually in Thai language) at the Cineplex on the top floor of the center.

The largest mall in town is Big C Super Center built alongside the Chee River about half way between the city center and Khamriang Campus. As well as Big C which sells a wide range of food items and household goods there are several specialist stores, banks and a food court.

24-hour convenience stores, such as 7-Eleven, appear to be almost everywhere and local shops line many streets. While Thai people enjoy these Western-style shops, traditional Thai shopping is done in street markets. To experience true Thai-style shopping keep your eyes open for these markets which crop up at different times in different places. They're a great place to grab a bargain.

GETTING THINGS DONE

Dealing with bureaucracies and others from whom we need to obtain some service can at times be challenging, not just in Thailand but anywhere. Add to this a lack of understanding of Thai cultural conventions and this can lead to frustration. However, the problems can be lessened by following a few basic guidelines that are probably just as relevant in your home country as Thailand.

First, if you need someone to do something for you, don't assume they are sitting there with nothing to do waiting for you to make a request. Staff at MSU or at the bureaucracies you may need to deal with have other commitments and tasks to take care of. You may think that your request is the most important and most urgent but you don't know—they may happen to be in the middle of a project that has been planned for months. Do you think they are going to drop all their plans just because you walked in the door?

If something is really important or urgent, make your request in person and explain the situation as quietly and calmly as you can. Sending an email and then sending another a few days later to complain about a lack of response is not going to be particularly effective. The person who needs to attend to your problem may be busy on the aforementioned project. They may not have even opened your first email. If it's important, don't leave it to chance. Go and see someone well before you need an answer. If you cannot possibly go in person, a telephone call is better than an email. Even if it doesn't give you the answer you want you will have some opportunity to gauge a response and plan your next move. An unanswered email tells you nothing.

If you need to make a request from someone who doesn't speak your language, perhaps you need to take a Thai friend along to translate for you. The Thai friend will also be more familiar with how to handle a situation in Thailand and how to get things done.

GETTING A MOBILE PHONE

Mobile phones are extremely common in Thailand, more so than home phones. Almost everyone has a mobile phone (sometimes called handphone) and calls are quite cheap. If you want to bring a phone from your home country, provided it's not locked, you should be able to buy a SIM card here. Alternately you can get a package deal on a phone and SIM here in Thailand.

There are three phone companies in Thailand. Each has its strengths and weaknesses. If you ask Thai friends for advice some will suggest one company, others another. Ask them why they like their particular phone company and make your decision based on what's important to you. To make your own comparison, check the phone company

websites:

DTAC: <http://www.dtac.co.th/english/postpaid.html>

AIS One-2-Call: <http://www.12call.ais.co.th/index.html>

True: <http://www.truemove.com/eng/home.htm>

When you buy a SIM it will come with an amount of credit—usually small. You will need to top it up before the expiry date. Even if you have credit, top up your phone before the expiry date or you may lose the credit you have. 300 baht credit should keep you connected for a month or more depending on which company you choose.

EMERGENCY INFORMATION

EMERGENCY – DIAL 191 FOR– POLICE / AMBULANCE

Police 191

MSU Ambulance 08 1965 6924

Mahasarakham Public Hospital

Phadung Withi Road (near cnr Rimklongsomthawin Rd)

phone 043 740 993

Private hospitals in Khon Kaen will send an ambulance if required.

Khon Kaen Ram, phone 043 333 800

Srinagarind Hospital (Khon Kaen Uni), phone 043 236 808, 043 244 700

The English Thai sentences below may also come in handy.

Please call the police. – กรุณาเรียกตำรวจ

I am sick. Please call an ambulance - ฉันป่วย กรุณาเรียกรถพยาบาล

I'd like to see a doctor. – ฉันต้องการพบแพทย์

PUBLIC HOLIDAYS IN THAILAND – NO CLASSES

New Year's Day - January 1

Makha Bucha Day - full moon of 3rd Thai lunar month, usually February

Chakri Memorial Day - April 6, commemorates the establishment of the Chakri Dynasty and the founding of Bangkok by King Buddha Yodfa Chulaloke in 1782.

Songkran Festival - April 13-15, traditional Thai new year. Many people return home for family reunions.

Coronation Day - May 5, commemorates the coronation of King Bhumibol Adulyadej in 1950.

Royal Ploughing Ceremony Day - usually in May, date determined astrologically.

Vesak (Wisakha Bucha) - full moon, 6th Thai lunar month, usually May. Observance of the birth, enlightenment and death of the Buddha.

Asanha Bucha - full moon, 8th Thai lunar month, usually July. Commemorates the Buddha's first teaching, known as the Four Noble Truths.

Asanha Bucha - 2010: 25 July, 2011: 15 July

Beginning of Pansa - first waning moon, 8th Thai lunar month, usually July, marks the commencement of Buddhist Rains Retreat, sometimes called Buddhist Lent. (Usually the day following Asanha Bucha)

HM the Queen's Birthday - 12 August, commemorates the birthday of Queen Sirikit, also observed as Mother's Day.

Chulalongkorn Day - 23 October, commemorates the death of King Chulalongkorn in 1910.

HM the King's Birthday - 5 December, commemorates the birthday of King Bhumibol Adulyadej in 1927. Also observed as National Day and Father's Day.

Constitution Day - 10 December, commemorates the promulgation of the first permanent constitution in 1932.

New Year's Eve - 31 December

MAHASARAKHAM UNIVERSITY



Public Devotion is a Virtue of the Learned.